

FLEXVERSE™

Hydrophilic Swellable Water Bar for Joint Sealing-Polymer

TECHNICAL DATA SHEET

Product Description

FLEXVERSE™ Swellable water bar is polymer based strip composed of synthetic rubber and TPE compound sealing profile with swell seal contact with water to seal all types of joints and penetrations in concrete. It has a rectangular profile and is available in several sizes.

Uses

To seal:

- Construction joints
- Pipe, steel and pile cap penetrations through walls and base slabs
- Construction joints in cable ducts, etc.
- Around all types of penetrations through concrete

Characteristics / Advantages

- Easy to apply
- Can be applied on different substrates
- Highly economical
- Swells in contact with water
- Can swell in construction joint gap
- Long-term reliability tested
- Resistant against water and various chemical sub-stances
- No hardening time required
- No welding required
- Adaptable to fit many different detailing tasks
- Different types and dimensions available

Technical Properties

Sr. No.	Parameters	Units	Requirement	Test Method
1	Tensile Strength (Min.)	Kg/cm ²	3	IS 3400 (Pt-1):2012
2	Elongation (Min.)	%	200	IS 3400 (Pt-1):2012
3	Hardness	Shore A	35 +/-5	IS 3400 (Pt-2):2003
4	Swelling Ratio (Portable Water)			
	After 24 hours (Min.)	%	100	IS 3400 (Pt-6):2012 / ASTM D417
	After 7 days (Min.)	%	300	IS 3400 (Pt-6):2012 / ASTM D417

Note: We can also manufacture the product as per customer specification / requirements.

Dimensions

Type	Code	Width	Height
FLEXVERSE™	FVP-501	20 mm	25 mm
FLEXVERSE™	FVP-502	20 mm	10 mm
FLEXVERSE™	FVP-503	20 mm	5 mm

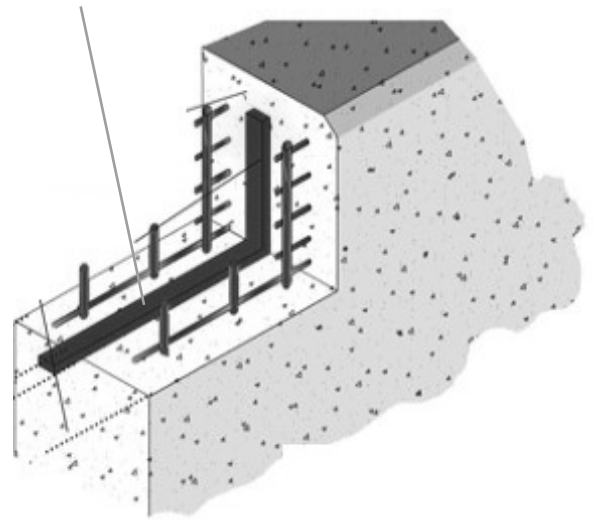
Note: Other dimensions also available as per customer requirements.

Installation

Application of swellable water bar at concrete construction joint.

- Concrete surface must be cleaned, free and remove all debris and loose concrete.
- Fixing of hydrophilic Swellable water stop at construction joints with PVC/mechanical fasteners with the gape of 500mm c/c in the raft slab and wall
- Position water stop on joint with a minimum of 3 Inches (75 mm) concrete coverage on all sides.
- Place concrete without displacing water stop from the position and avoid to water contact before concrete placing
- Thoroughly and systematically vibrate concrete around water stop to obtain impervious, void-free concrete in vicinity of joint and to maximize intimate contact between concrete and water stop. Do not allow vibrator to contact the strip water stop.

Swellable water bar



Storage Conditions: The product must be stored in dry place & room temperature.



A Product By

M/s. HITECH RUBBER INDUSTRIES

INIZIO, 201, 2nd floor, Cardinal Gracious Road, Chakala, Andheri (East) Mumbai-400099 Maharashtra, (India)
Mob: +91 9322288578 Phone: +91 22 28395931/32 Email: sales@hitechrubber.in Website: www.hitechrubber.in

Associate Concern

M/s. KANTA ENTERPRISES

1/3, HMG Lane, S.P.Road Cross, Bangalore - 560002 Karnataka (India) Mob: +91 9341256501
Phone: +91 80 41460854/42033615 Email : sales@kantaenterprises.com Website: www.kantaenterprises.com