

# FLEXVERSE™

Hydrophilic Swellable Water Bar for Joint Sealing-Bentonite

## TECHNICAL DATA SHEET

### Product Description

FLEXVERSE™ Swellable water bar is composed of Elastomer & Bentonite based clay which is designed to stop water ingress through cast-in-place concrete construction joints and penetrations in concrete. It has a rectangular profile and is available in several sizes.

### Uses

To seal:

- Construction joints
- Pipe, steel and pile cap penetrations through walls and base slabs
- Construction joints in cable ducts, etc.
- Around all types of penetrations through concrete

### Characteristics / Advantages

- Easy to apply
- Can be applied on different substrates
- Highly economical
- Swells in contact with water
- Can swell in construction joint gap
- Long-term reliability tested
- Resistant against water and various chemical sub-stances
- No hardening time required
- No welding required
- Adaptable to fit many different detailing tasks
- Different types and dimensions available

### Technical Properties

Sr. No.	Parameters	Units	Requirement	Test Method
1	Tensile Strength (Min.)	Kg/cm <sup>2</sup>	3	IS 3400 (Pt-1):2012
2	Elongation (Min.)	%	150	IS 3400 (Pt-1):2012
3	Hardness	Shore A	35 +/-5	IS 3400 (Pt-2):2003
4	Swelling Ratio (Portable Water)			
	After 24 hours (Min.)	%	100	IS 3400 (Pt-6):2012 / ASTM D417
	After 7 days (Min.)	%	300	IS 3400 (Pt-6):2012 / ASTM D417

**Note: We can also manufacture the product as per customer specification / requirements.**

## Dimensions

Type	Code	Width	Height
FLEXVERSE™	FVB-401	20 mm	25 mm
FLEXVERSE™	FVB-402	20 mm	10 mm
FLEXVERSE™	FVB-403	20 mm	5 mm

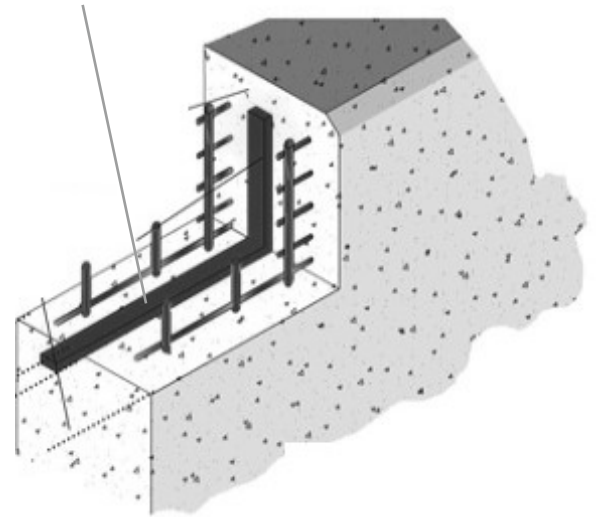
Note: Other dimensions also available as per customer requirements.

## Installation

### Application of swellable water bar at concrete construction joint.

- Concrete surface must be cleaned, free and remove all debris and loose concrete.
- Fixing of hydrophilic Swellable water stop at construction joints with PVC/mechanical fasteners with the gape of 500mm c/c in the raft slab and wall
- Position water stop on joint with a minimum of 3 Inches (75 mm) concrete coverage on all sides.
- Place concrete without displacing water stop from the position and avoid to water contact before concrete placing
- Thoroughly and systematically vibrate concrete around water stop to obtain impervious, void-free concrete in vicinity of joint and to maximize intimate contact between concrete and water stop. Do not allow vibrator to contact the strip water stop.

Swellable water bar



**Storage Conditions: The product must be stored in dry place & room temperature.**



A Product By

**M/s. HITECH RUBBER INDUSTRIES**

INIZIO, 201, 2<sup>nd</sup> floor, Cardinal Gracious Road, Chakala, Andheri (East) Mumbai-400099 Maharashtra, (India)  
Mob: +91 9322288578 Phone: +91 22 28395931/32 Email: sales@hitechrubber.in Website: www.hitechrubber.in

Associate Concern

**M/s. KANTA ENTERPRISES**

1/3, HMG Lane, S.P.Road Cross, Bangalore - 560002 Karnataka (India) Mob: +91 9341256501  
Phone: +91 80 41460854/42033615 Email : sales@kantaenterprises.com Website: www.kantaenterprises.com